

Innovative Pedagogies for Online Mode

NEP-2020 envisions holistic education for learners. The underlying need for holistic education is to use different pedagogies.



Live Online Classes

Live online classes enable real-time lectures, breaking physical classroom barriers. It engages students through video conferencing apps and online whiteboard, breaking barriers of reach.

Online Whiteboard

Online whiteboards are effective teaching tools that facilitate communication and student engagement in virtual classrooms. Teachers and students can connect in real-time for assignments, mind mapping, interactive exercises, brainstorming and feedback.

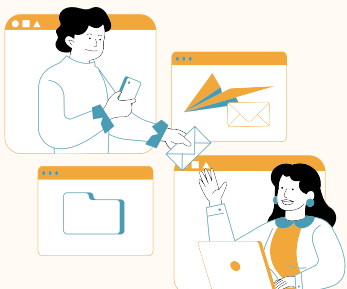


Pre-Recorded Video Lectures

Pre-Recorded Video Lectures offer flexibility, convenience, and revision opportunities for students, offering a more convenient alternative to live online courses.

Online Quizzes

Online quizzes improve teaching-learning experience by promoting active learning. These quizzes are time-efficient for teachers as well. They facilitate formative evaluation.

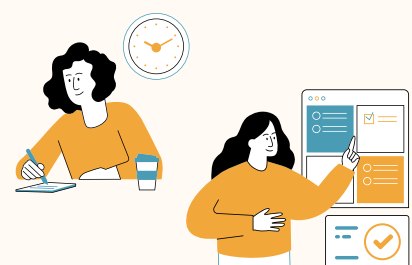


Collaborative ICT tools

Collaborative ICT tools like Digital Walls, concept-mapping, sticky-notes, and Open Project enhance knowledge, satisfaction, and motivation in learning. Teachers need to ensure ease of use.

Flipped Classroom

The flipped classroom, a teaching approach where students read and review material before teachers teach. It incorporates effective techniques like Online quizzes, Polls, Infographics, Mind maps or Word Clouds.



Game-Based Teaching

Game-based teaching methods enhance student engagement and learning, even for those who are not quite good at studying can find this way of teaching helpful in learning and memorizing.

Class Blog

Students and teachers create class blogs to share learning material, promoting self-learning and knowledge sharing.



Virtual Environments

It includes Virtual Labs, Museums, Augmented Reality (AR) - Virtual Reality (VR) Technologies, etc. AR-VR contents are specifically useful in teaching scenarios requiring field work.